

EPD Override

Q-Tron Part No. 7282.1301 and 7282.1302
Product Information Sheet

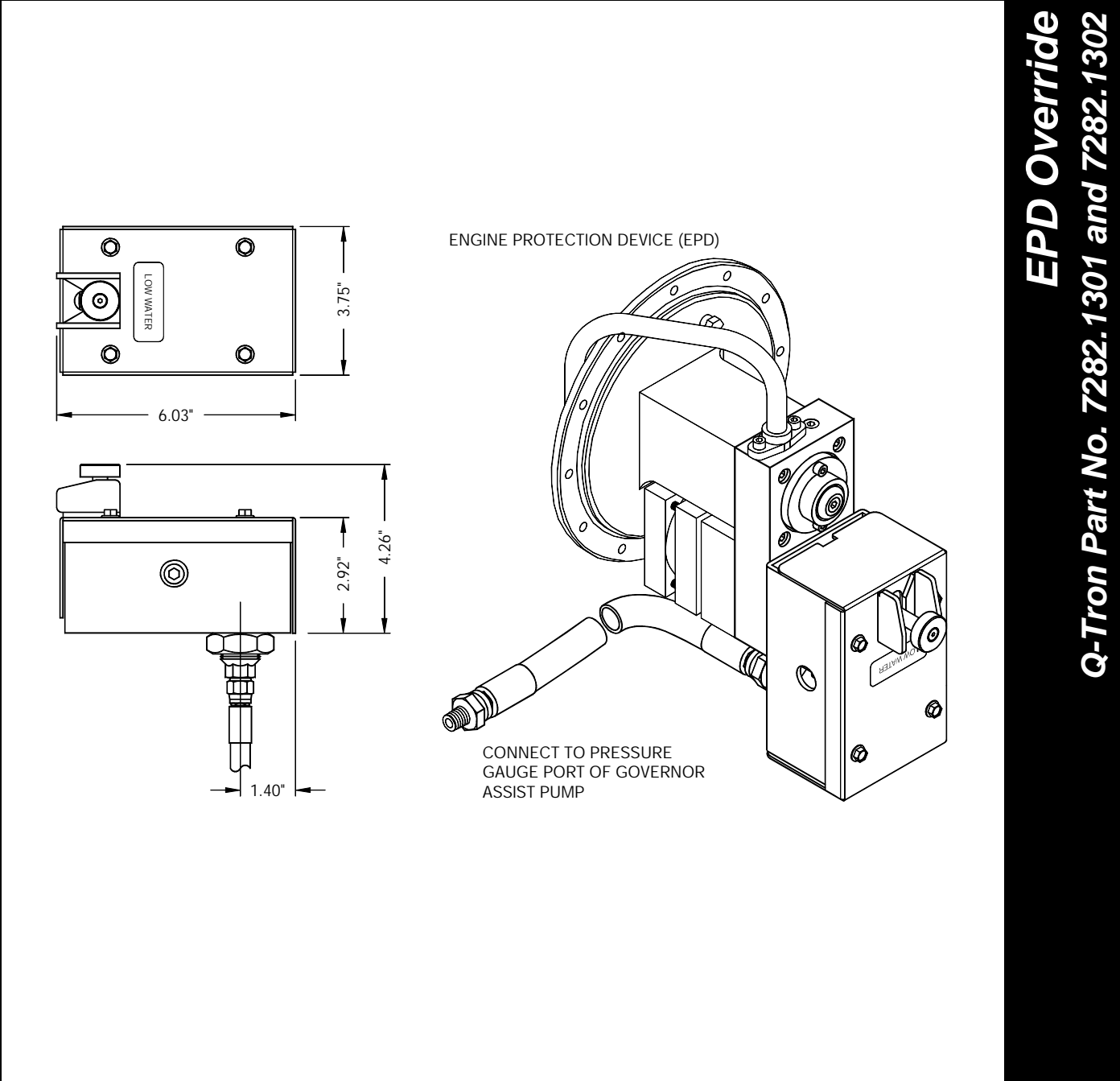


Figure 1. EPD Override application



EPD Override Specifications

Q-Tron Part No.:	7282.1301 and/or 7282.1302
Weight:	5 lb (2.3 kg)
EPD Hydraulic Hose:	44" for EPD Override 7282.1301 54.5" for EPD Override 7282.1302
Operating Temperature:	-22°F to 158°F (-30°C to 70°C)

Operations

Used in conjunction with Q-Tron's Electronic *AUTOSTART* System, the EPD Override disables the engine protection device (EPD) during a locomotive auto-restart. Disabling the EPD prevents an unnecessary (or false) engine shut down during locomotive auto-restart resulting from a false low water pressure condition.

Mounting Instructions

Mount the EPD Override on the engine protection device (EPD), located in the engine compartment.

Important: Figure 2, Figure 3, Figure 4, Figure 5, Figure 6, and Figure 7 include helpful mounting information. When installing the EPD Override, refer to these illustrations to locate the position of screws and other mounting hardware.

1. Unscrew and reserve the four screws from the EPD Override cover. Remove the cover (see Figure 2).
2. Remove three of the four existing cap screws from the EPD (see Figure 3). These screws are no longer required for EPD Override installation.

Important: Remove only three cap screws, not four, surrounding the EPD Low Water Button (see Step 2). If all four cap screws are removed, permanent damage to the EPD and/or to the main engine may result and/or intermittent engine shutdowns may occur.

3. Attach the EPD Override Body assembly to the EPD using the provided cap screws and washers (see Figure 4). Tightening torque must be 16.7 ft.lb or 200 in.lb.

4. Check the alignment of the EPD Override on the EPD to ensure proper operation (see Figure 5):
 - a. Open the water drain valve on the water line to the EPD. Ensure the Low Water Button is tripped when the drain valve is open.
 - b. Press and hold down the pressure point end of the EPD Override lever until it seats to the pressure point. **Do not adjust the pressure point.**
 - c. Screw down the ball plunger until it makes contact with the Low Water Button.
 - d. Tighten the set screw to secure the ball plunger into position. Tightening torque must be 7.5 ft.lb or 90 in.lb.
5. Connect the EPD Override hydraulic hose to the pressure gauge port on the Governor Assist Pump (see Figure 6). Refer to the *Governor Assist Pump Product Information Sheet* for more information about the assist pump connection.
6. Run the Governor Assist Pump. Ensure the EPD Override resets the Low Water Button. Stop the Governor Assist Pump; open the water drain valve, allowing the Low Water Button to fully release. The reset button shaft should be in the position illustrated in Figure 5.
7. Replace the EPD Override cover, securing it using the four screws reserved from Step 1. Attach the Low Water Reset Button using the screw provided (see Figure 7).

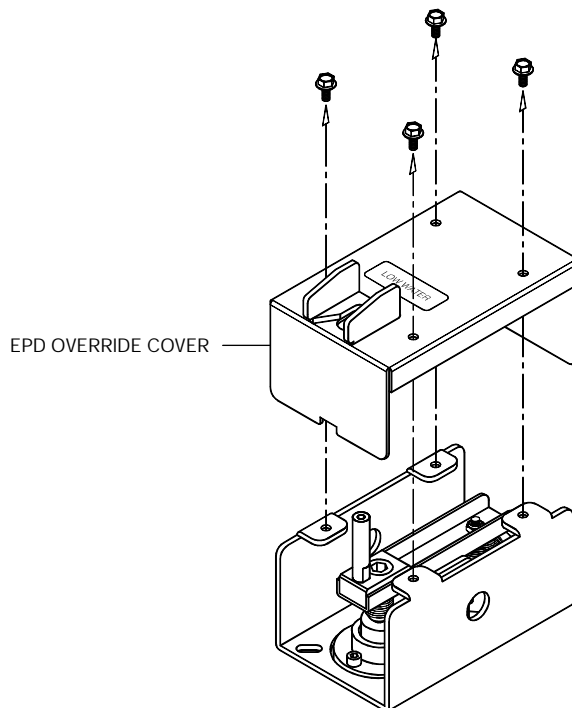


Figure 2. EPD Override, Connection Figure A

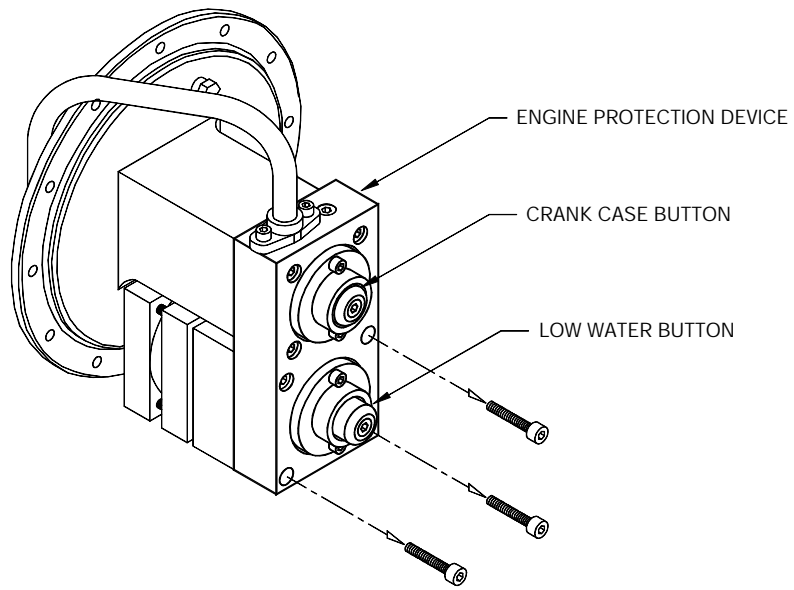


Figure 3. EPD Override, Connection Figure B

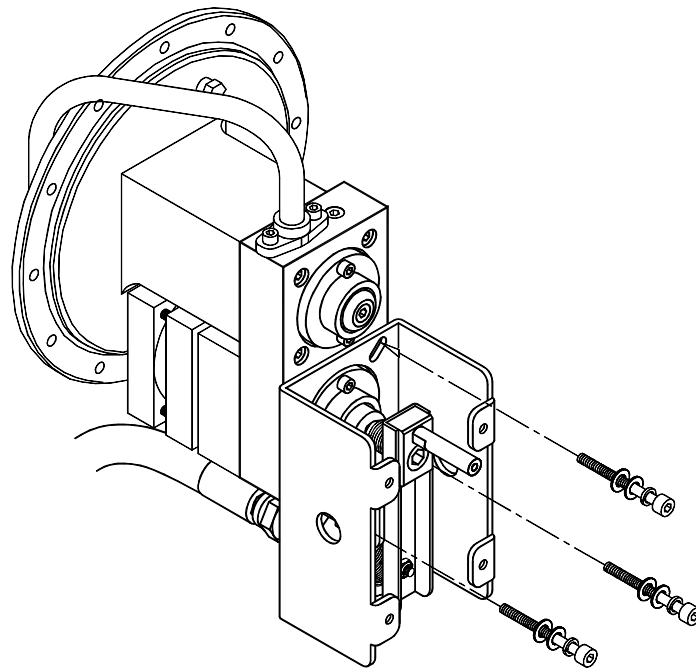


Figure 4. EPD Override, Connection Figure C

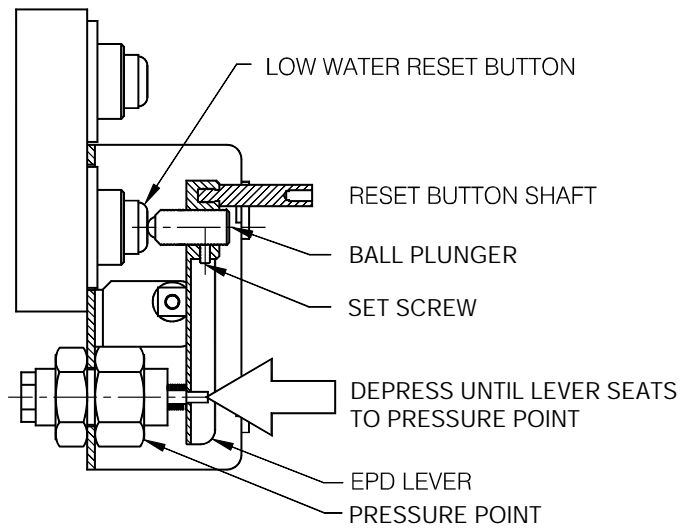


Figure 5. EPD Override, Connection Figure D

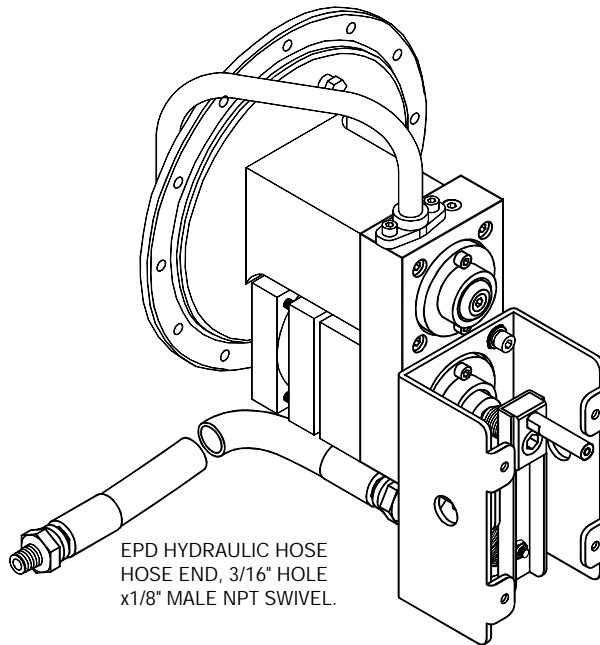


Figure 6. EPD Override, Connection Figure E

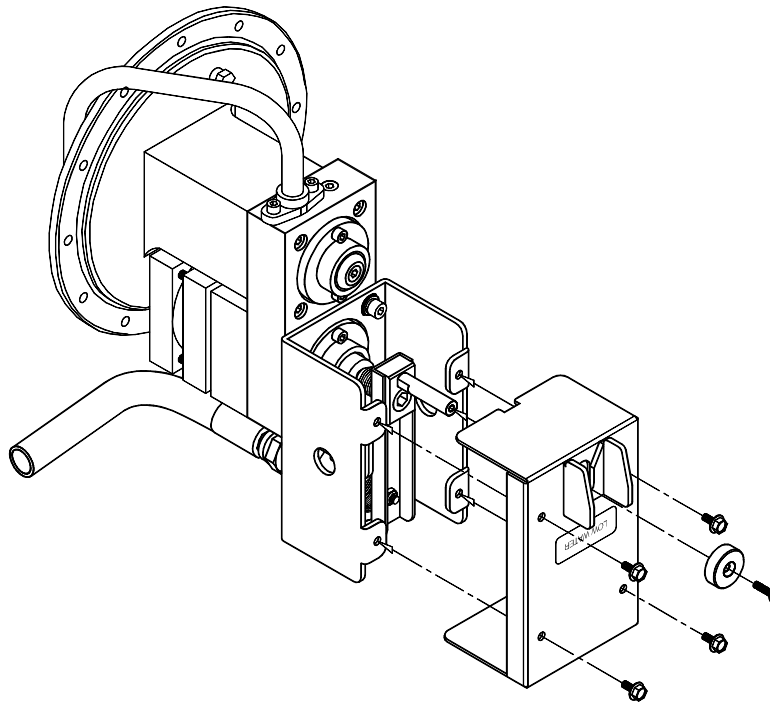


Figure 7. EPD Override, Connection Figure F