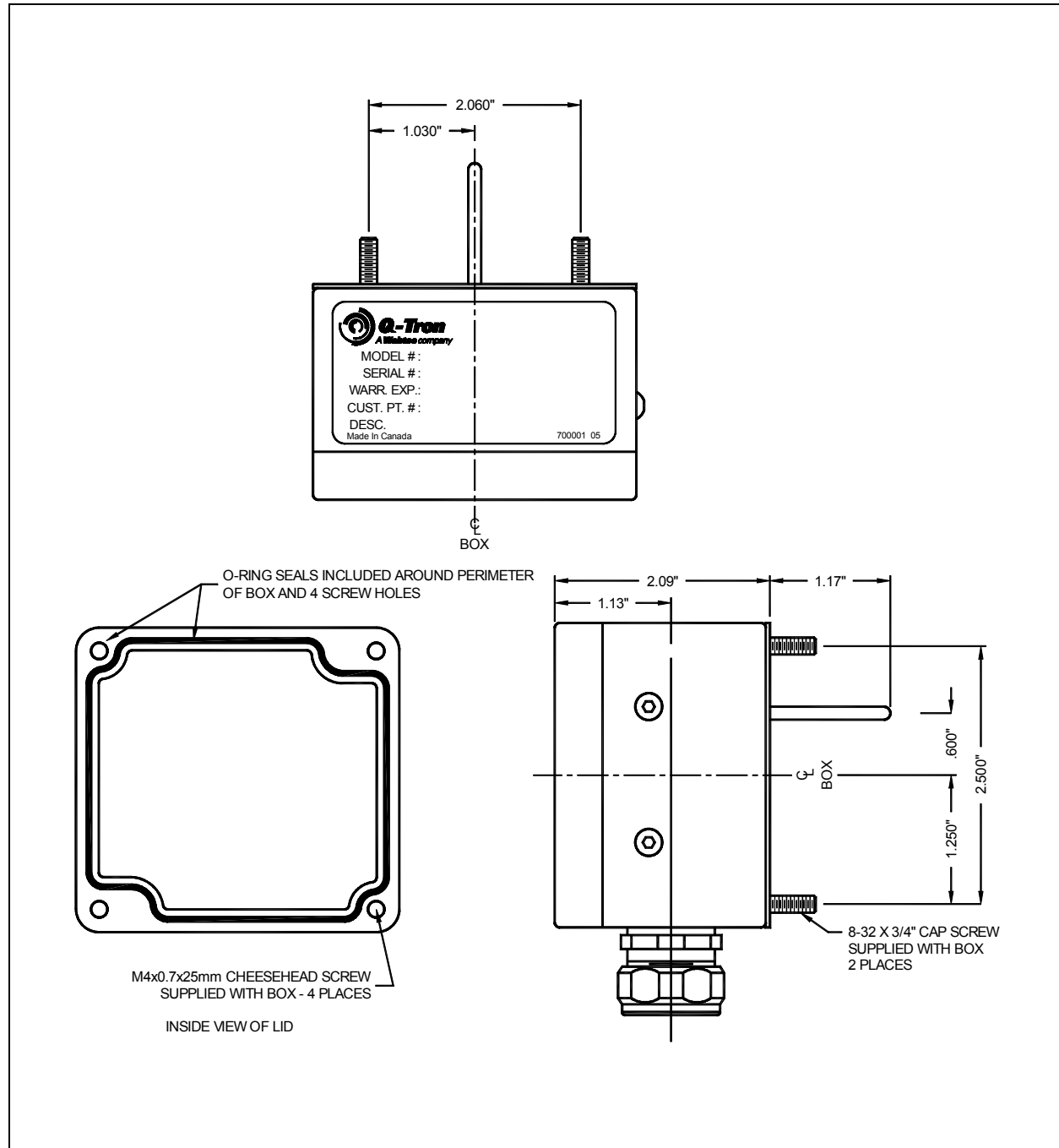


TM Cooling Air Temperature Sensor Assembly

Q-Tron Part No. 7216.0801

Product Information Sheet



TM Cooling Air Temperature Sensor Assembly
Q-Tron Part No. 7216.0801

Figure 1. TM Cooling Air Temperature Sensor Assembly application



TM Cooling Air Temperature Sensor Assembly Specifications

Q-Tron Part No.:	7216.0801
Output Signal:	10K ohms at 25°C (77°F) NTC (Negative Temperature Coefficient)

Operations

The TM Cooling Air Temperature Sensor assembly is a two-wire Resistive Temperature Detector (RTD) mounted in a die-cast aluminum housing that measures ambient air temperatures. The resistance of the probe is approximately 10K ohms at an ambient temperature of 25°C (77°F).

Mounting Instructions

Mount the TM Cooling Air Temperature Sensor assembly in the traction motor air duct under the cab floor. The sensor extends through the deck into the Traction Motor blower duct.

To install the TM Cooling Air Temperature Sensor assembly, drill three holes in the blower duct (refer to the mounting pattern in Figure 2). Run the Traction Motor Air Temperature cable, from the TM Cooling Air Temperature Sensor assembly, to the connection indicated in the locomotive schematic.

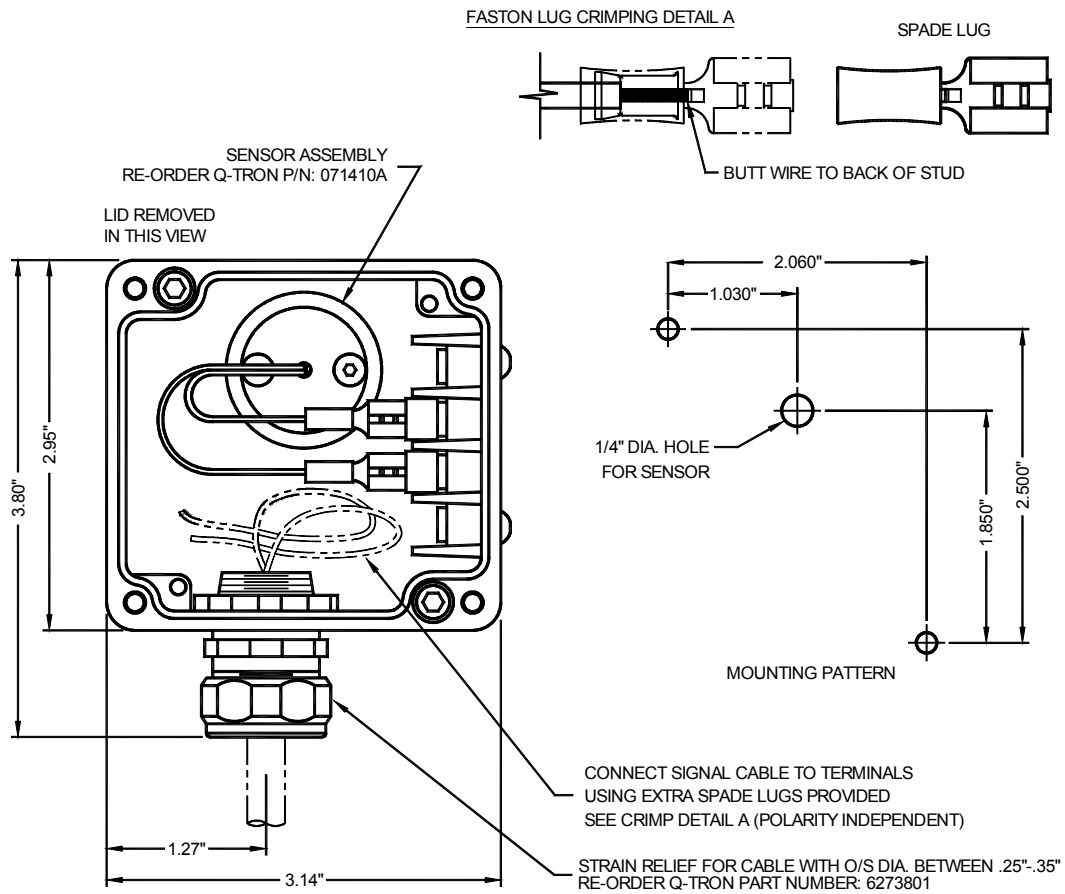


Figure 2. TM Cooling Air Temperature Sensor assembly mounting guide