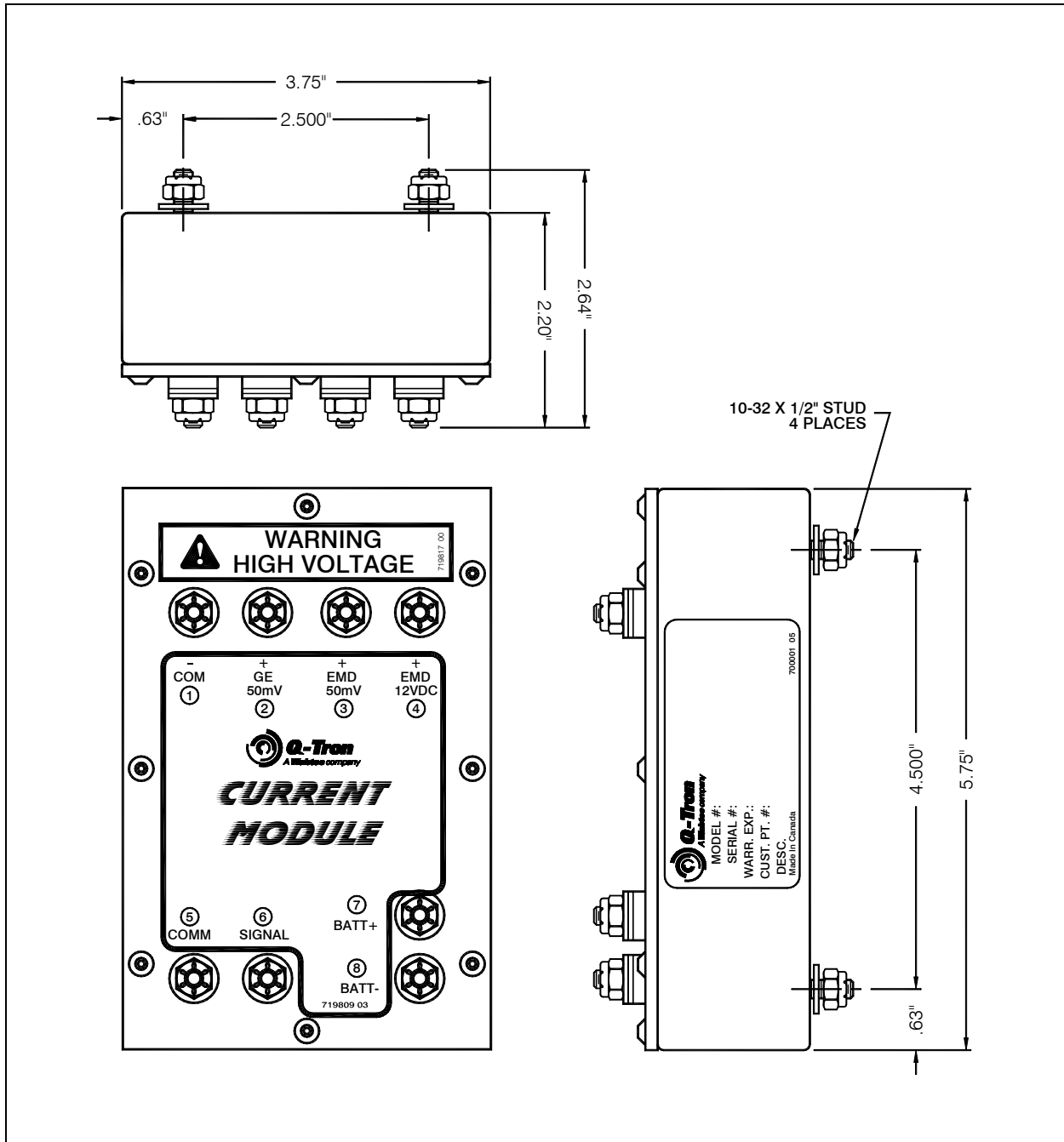


Traction Motor Current Module

Q-Tron Part No. Q-88198/3

Product Information Sheet



Traction Motor Current Module
Q-Tron Part No. Q-88198/3

Figure 1. Traction Motor Current Module application



Traction Motor Current Module Specifications

Q-Tron Part No.: Q-88198/3
Weight: 1 lb (.5 kg)
Connection: Use the appropriate shunt indicated below in Figure 2.

Signal Description		Connection	
Shunt Input	Common	1	-COM
	1500 Amp-50 mV	2	GE (+50 mV)
	1000 Amp-50 mV	3	EMD (+50 mV)
	1500 Amp-10 VDC	4	EMD (+12 VDC)
Output to Event Recorder	Common	5	COMM
	1-5 VDC Signal	6	SIGNAL
Power	+74 VDC	7	BATT+
	74V Return	8	BATT-

Figure 2. Signal Description/Connection Table

Operations

The Traction Motor (TM) Current Module connects to the Traction Motor shunt on DC traction motor locomotives. Three types of shunts can be accommodated: 50 mV (GE), 50 mV (EMD), and 12 VDC (EMD). The TM Current Module receives power from the locomotive 74V battery and outputs a 1-5 VDC signal for the event recorder.

This module has three-part isolation, where the input is isolated from the battery, which is also isolated from the output signal.

Mounting Instructions

Connect the Traction Motor Current Module to the appropriate shunt. Refer to Figure 2 for connection information.