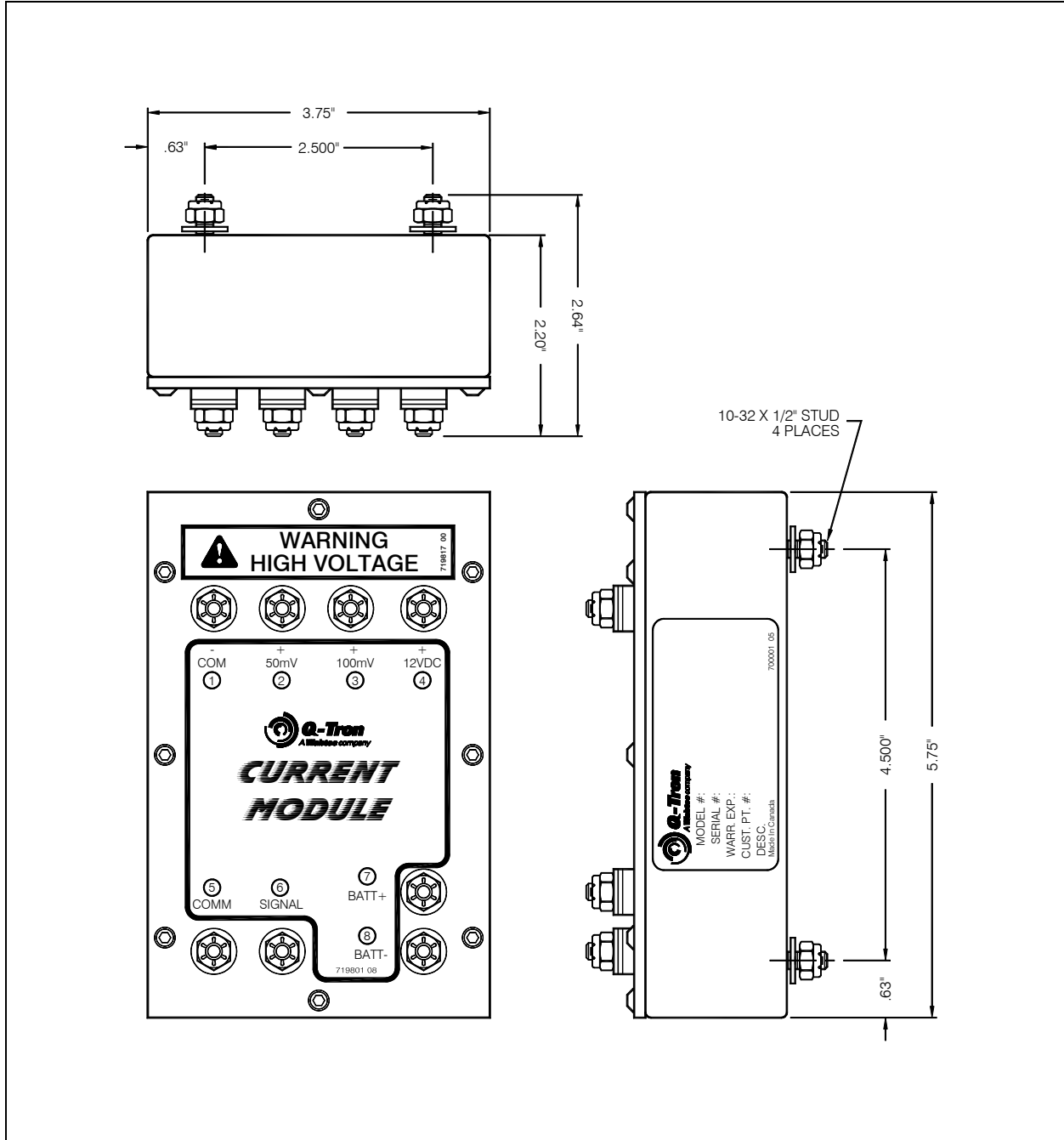


Traction Motor Current Module

Q-Tron Part No. Q-88198

Product Information Sheet



Traction Motor Current Module
Q-Tron Part No. Q-88198

Figure 1. Traction Motor Current Module application



Traction Motor Current Module Specifications

Q-Tron Part No.: Q-88198
Weight: Approximately 1 lb (.5 kg)
Connection: Use the appropriate shunt indicated below in Figure 2.

Signal Description		Connection	
Shunt Input	Common	1	-COM
	1000 Amp–50 mV	2	+50 mV
	1000 Amp–100 mV	3	+100 mV
	1500 Amp–10 VDC	4	+12 VDC
Output to Event Recorder	Common	5	COMM
	1–5VDC Signal	6	SIGNAL
Power	+74 VDC	7	BATT+
	74V Return	8	BATT-

Figure 2. Signal Description/Connection Table

Operations

The Traction Motor (TM) Current Transducer Module connects to the Traction Motor shunt, or optionally, a Tractive Effort (TE) output from the locomotive computer. Three types of shunts can be accommodated: 50 mV, 100 mV, or 12 VDC. The TM Current module receives power from the locomotive 74V battery and outputs a 1–5 VDC signal for the event recorder.

This module has a three-part isolation where the input is isolated from the battery, which is isolated from the output signal.

Mounting Instructions

Connect the Traction Motor Current Module to the appropriate shunt. Refer to Figure 2 for connection information.