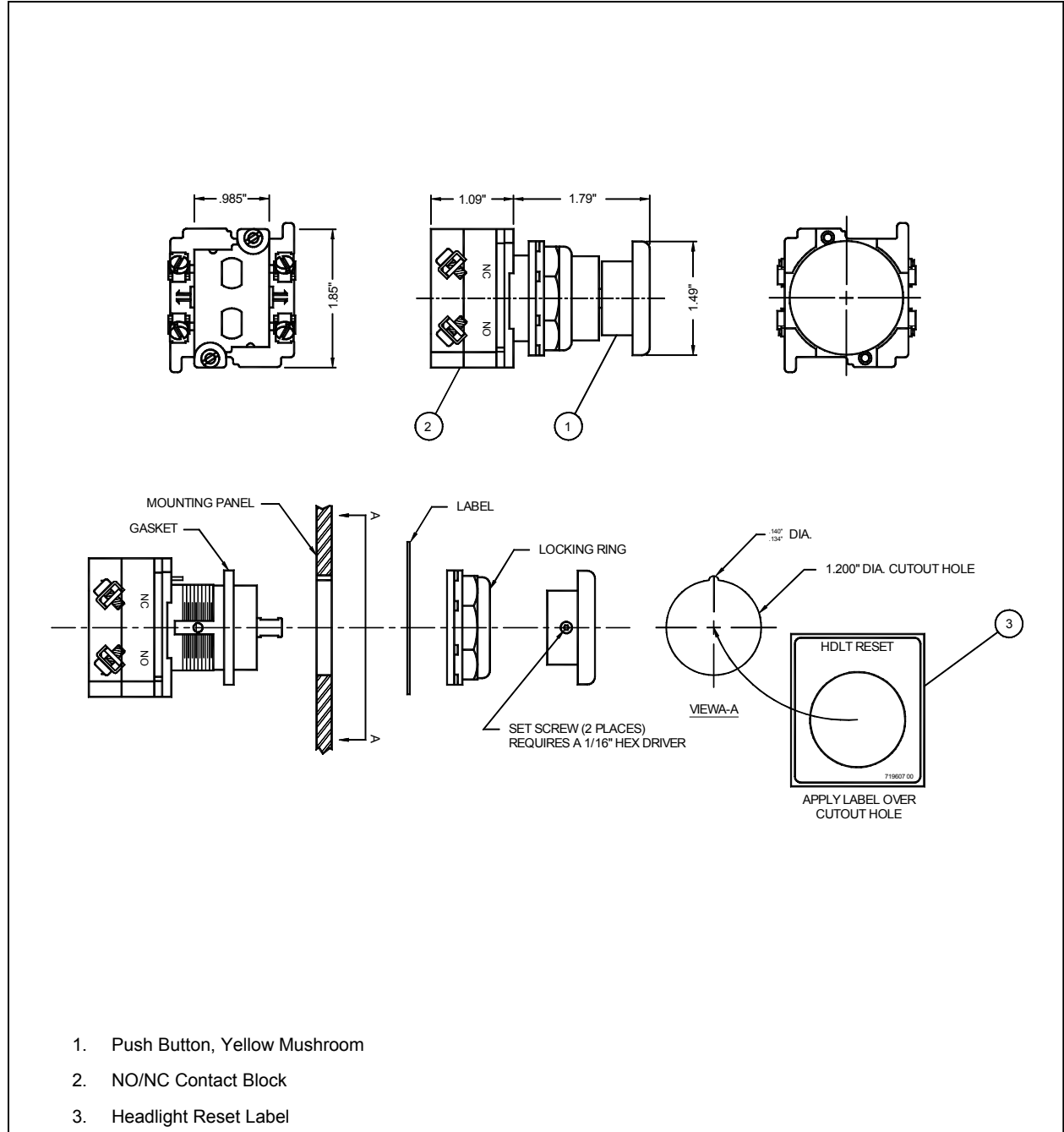


# Headlight Reset Switch

Q-Tron Part No. Q-88196/10

Product Information Sheet



**Headlight Reset Switch**  
**Q-Tron Part No. Q-88196/10**

Figure 1. Headlight Reset Switch application



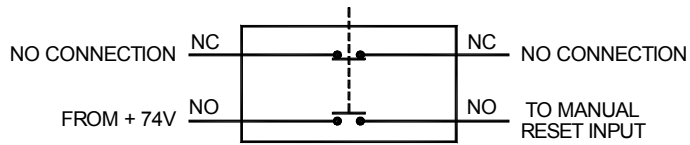


Figure 2. Headlight Reset Switch Connection Detail

## **Headlight Reset Switch Specifications**

Q-Tron Part No.: Q-88196/10  
 Configuration: Typically wired for Normally Open (NO) operation.

## **Operations**

Used in conjunction with the Load Shedding function of the QEG 1000 Electronic *AUTOSTART* System, the Headlight Reset Switch allows the operator to turn on the locomotive's headlights (turned off by the Load Shedding function following a 2-minute time-out period). Pressing the yellow Headlight Reset push-button, located on the control stand, restores lighting and restarts the 2-minute time-out period.

## **Mounting Instructions**

Mount the Headlight Reset Switch push-button on the control panel within easy reach of cab personnel. Refer to Figure 1 for mounting illustration.