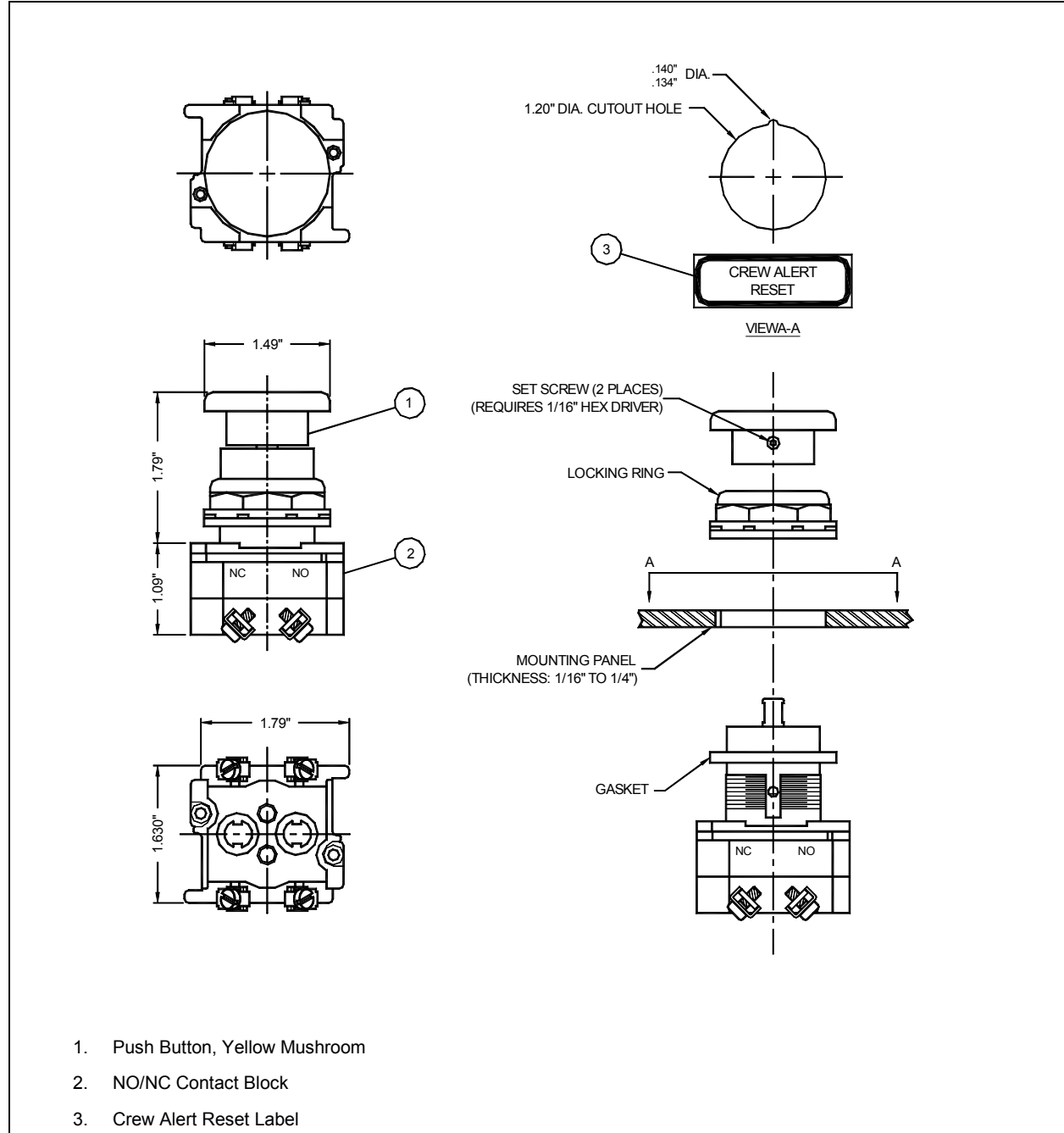


# Manual Reset Switch (Vigilance)

Q-Tron Part No. Q-88196/1

Product Information Sheet



Manual Reset Switch  
Q-Tron Part No. Q-88196/1

Figure 1. Manual Reset Switch (Vigilance) application



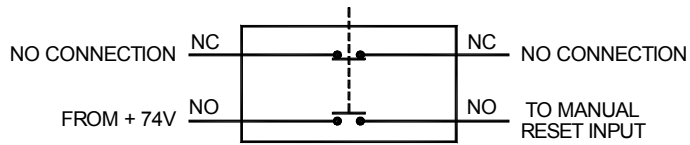


Figure 2. Manual Reset Switch Connection Detail

## ***Manual Reset Switch (Vigilance) Specifications***

Q-Tron Part No.: Q-88196/1

Configuration: Typically wired for Normally Closed (NC) operation.

## ***Operations***

The Manual Reset Switch allows the operator to manually reset the Vigilance system's Crew Alert Timer cycle without affecting other locomotive operations. The yellow push-button reset switch is located on the control stand within easy reach of cab personnel.

### **To perform a manual Crew Alert Timer cycle reset:**

Press the Manual Reset button.

## ***Mounting Instructions***

1. Mount the Manual Reset Switch push-button on the control panel within easy reach of cab personnel. Refer to Figure 1 for mounting illustration.
2. Apply the adhesive-backed Crew Alert Reset label directly below the button on the control panel.