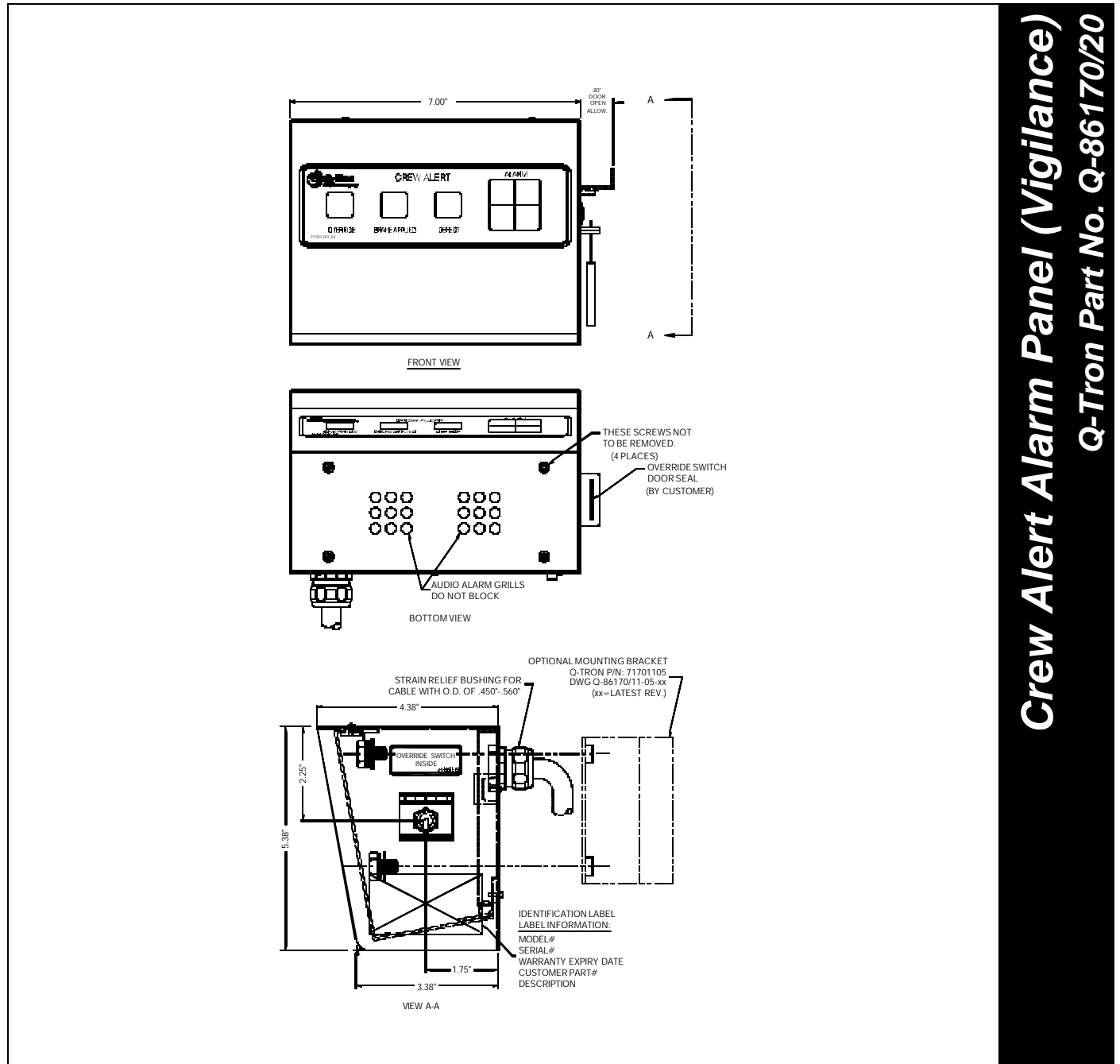


Crew Alert Alarm Panel (Vigilance)

Q-Tron Part No. Q-86170/20

Product Information Sheet



Crew Alert Alarm Panel (Vigilance)
Q-Tron Part No. Q-86170/20

Figure 1. Crew Alert Alarm Panel application – top, bottom, and end views



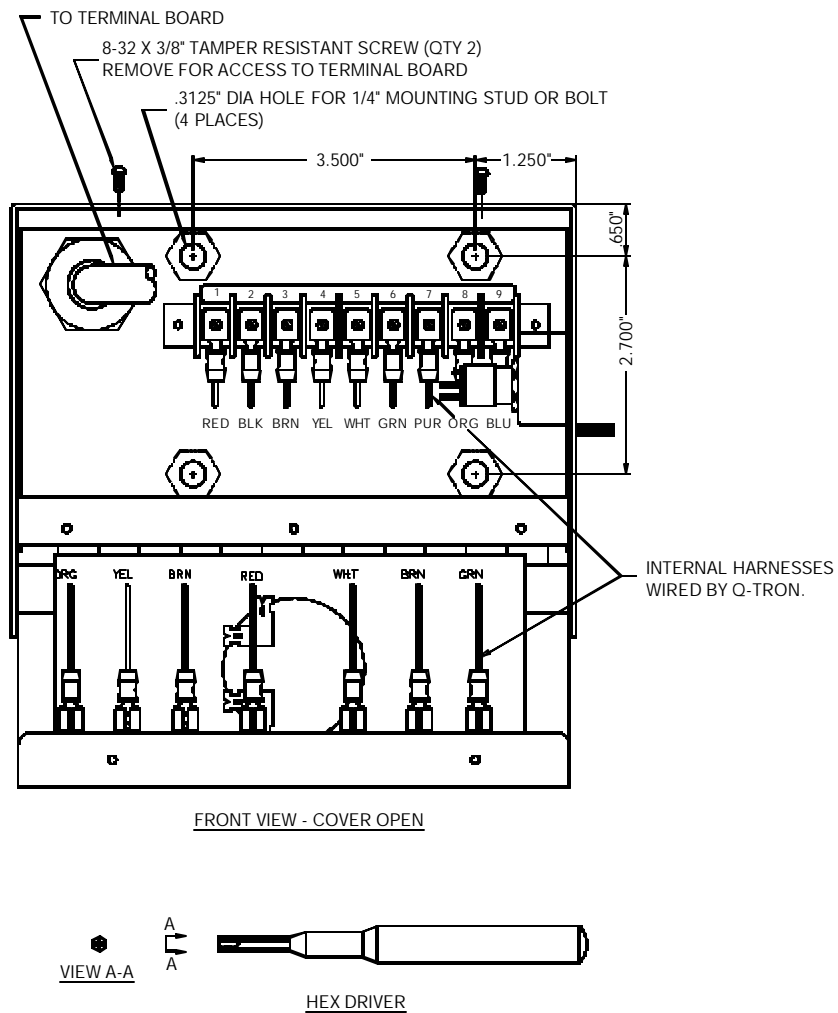


Figure 2. Crew Alert Alarm Panel – cover open (top) and connection schematic (bottom)

Figure 2 Note: For installing or servicing, a special Hex Driver tool is required to remove the tamper resistant screws on the cover. This tool can be obtained through Q-Tron (Q-Tron Part No. Q-50P026).

Connection Table	
Terminal	Function
1	+74V
2	-74V
3	Brake Applied
4	Override
5	Defect
6	SCMV Out
7	Alarm Key
8	LED Return
9	SCMV In

Figure 3. Connection Table

Alarm Panel Specifications

Q-Tron Part No.:	Q-86170/20
Mounting Bracket:	Q-Tron Part No.: 71701105 (optional)
Indicator Lights:	Override: Single LED indicator (red) Defect: Single LED indicator (red) Brake Applied: Single LED indicator (red) Alarm: Large 4-segment LED indicator (amber)
Audio Alarm:	Dual-tone audio alarm – 1100 and 1500 Hz at 105 dB
Weight:	3 lb (1.5 kg)
Override Switch:	74V MVOS/SCMV bypass feed

Operations

The semi-intelligent Crew Alert Alarm Panel is an integral part of the Vigilance system, providing visual and audio indicators that alert the operator to Vigilance-related activities.

The Override, Defect, Brake Applied, and Crew Alert Alarm warning lights turn On if the controlling equipment detects the symptoms that activate the Vigilance system. While the Crew Alert Alarm light is On, the Vigilance system sounds an audible alarm (the audio alarm speakers/grills are on the back of the panel).

This version of the Crew Alert Alarm Panel also includes an Override switch, used to temporarily bypass Vigilance control of the MVOS/SCMV (Overspeed/Safety Control Magnet Valve). The Override switch, located along the side of the panel, is encased to protect against breakage.

Mounting Instructions

Mount the Crew Alert Alarm Panel within clear sight and sound of the engineer. The optional Alarm Panel Mounting Bracket (see Figure 4) can be obtained through Q-Tron.

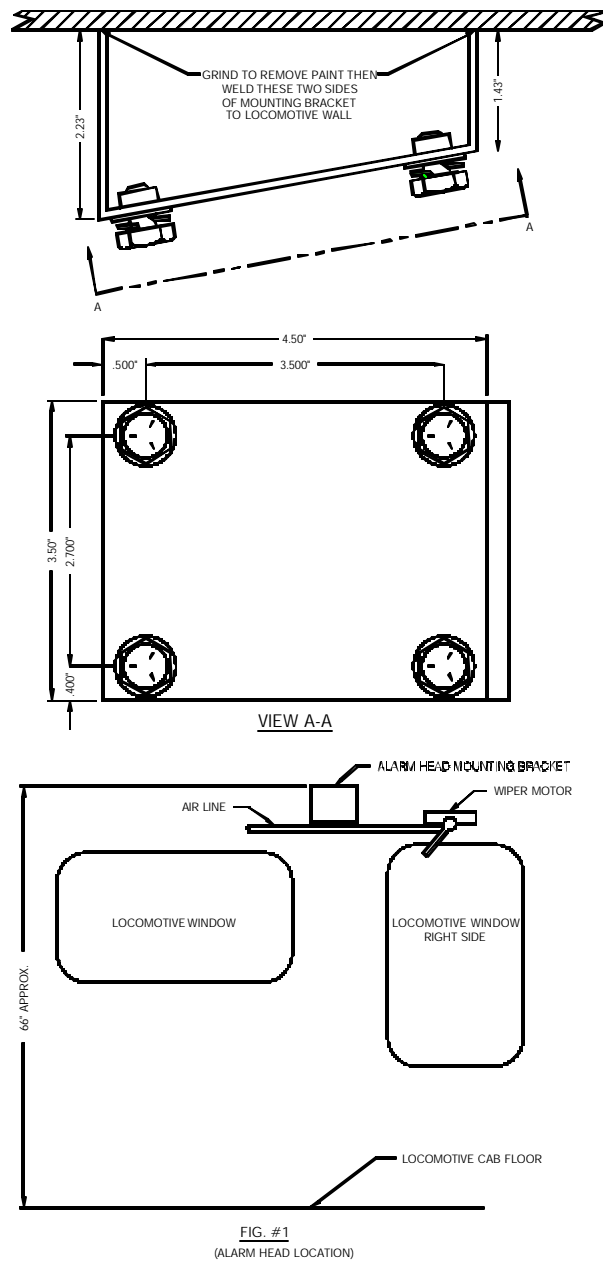


Figure 4. Optional Crew Alert Alarm Panel, Mounting Bracket (Q-Tron Part No. 71701105)